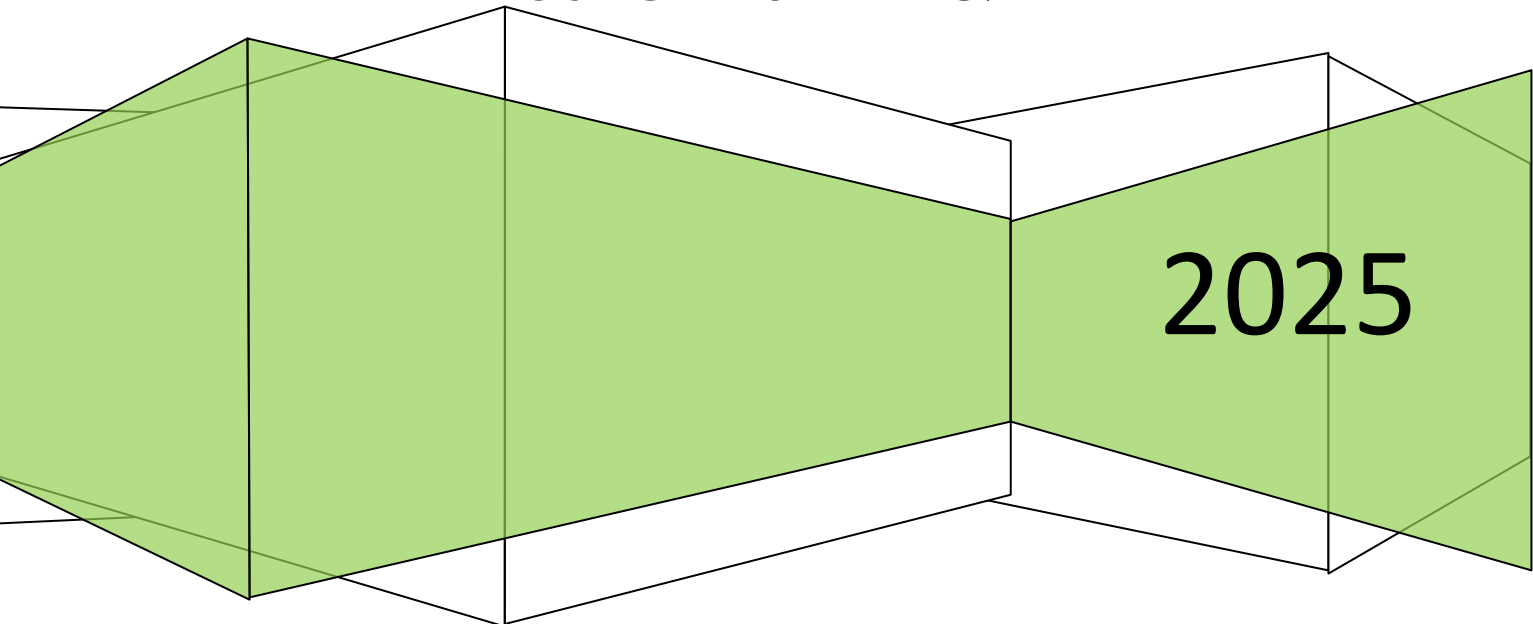


# **SENIOR SCHOOL Information Booklet**

**Years 1.0 1.1 & 1.2**

A decorative graphic consisting of a series of overlapping, three-dimensional green rectangular blocks that form a ribbon-like shape. The blocks are arranged in a sequence from left to right, with each block partially overlapping the one to its left. The rightmost block is the largest and contains the year "2025".

**2025**

# CONTENTS

WELCOME TO SENIOR SCHOOL 2025.....	2
SCHOOL PROMOTION DAY.....	3
FIRST DAY 2025.....	3
2025 TERM DATES FOR RHHS.....	3
CONTACT INFORMATION.....	4
KEY STAFF.....	4
SCHOOL HOURS.....	5
ATTENDANCE AND ABSENCES.....	6
ATTENDANCE SMS.....	6
MILLENNIUM PARENT PORTAL.....	6
SCHOOL MAP.....	7
DARE TO EXCEL.....	8
THE TIMETABLE STRUCTURE.....	9
STUDENT GUIDE – WHAT TO DO IF?.....	10
STUDENT MEDICAL DETAILS & HEALTH CONCERNS.....	11
BIOMETRICS: ATTENDANCE RECORDING.....	11
THE AIMS OF SENIOR STUDY.....	12
CURRICULUM OVERVIEW.....	12
FOCUS.....	13
SWITCH (Year 10 only).....	13
STAGE 6 – YEARS 1.1 and 1.2 HSC & ATAR.....	14
UAC (Universities Admission Centre) and ATAR (Australian Tertiary Admission Rank).....	15
YEAR 1.0 BOOK AND EQUIPMENT REQUIREMENTS.....	16
YEAR 1.1 & 1.2 BOOK AND EQUIPMENT REQUIREMENTS.....	17
CAREERS.....	18
COMMUNICATIONS AND CELEBRATIONS.....	18
LEARNING @ THE LIBRARY – FOR SENIOR STUDENTS.....	20
TECHNOLOGY IN 2025.....	21
SPECIAL RELIGIOUS EDUCATION.....	21
EXTRA CURRICULAR.....	22
SPORT.....	23
SAFETY AT SCHOOL.....	24
RIGHTS AND RESPONSIBILITIES.....	25
BEHAVIOUR CODE FOR STUDENTS.....	26
ANTI-BULLYING POLICY.....	31
MOBILE PHONES AND ELECTRONIC DEVICES POLICY.....	32
AEROSOL POLICY.....	33
UNIFORM POLICY.....	34
FOOTWEAR POLICY.....	35
SCHOOL CONTRIBUTIONS 2025 – YEAR 1.0.....	37
SCHOOL CONTRIBUTIONS 2025 – YEARS 1.1 & 1.2.....	37
ROUSE HILL HIGH SCHOOL FACEBOOK PAGE.....	38

# **WELCOME TO SENIOR SCHOOL 2025**

Welcome to our Senior Students 1.0, 1.1 and 1.2 for 2025.

In this booklet we have tried to give as much information as possible so that when you start on your first day you will feel confident and happy.

Rouse Hill High School offers an excellent academic program, highly qualified teachers and a safe and caring learning environment. We encourage students to take advantage of the exciting range of educational and extracurricular opportunities that are available and to always daRe to achieve their best.

Rouse Hill High School is a modern, vibrant, comprehensive high school with rich relationships with the primary schools of our learning community. In 2025, Rouse Hill High School will have Year 7 through to Year 1.2 enrolments of approximately 1400 students. You will be a valued part of the Rouse Hill High School culture of success and educational excellence.

Tuesday 19 November 2024 is Rouse Hill High School's Promotion Day. All students will progress to their next grade level and begin studying the curriculum for that year.

Exciting times are ahead and we look forward to seeing you next year as you continue your educational journey as a student of Rouse Hill High School.



# SCHOOL PROMOTION DAY

Rouse Hill High School will be starting the 2025 school year on Tuesday 19 November 2024. Students will be issued with their new timetables and emailed their assessment booklets. Students will need to be equipped with the stationery and equipment for their new year of study.

## FIRST DAY 2025

School commences for Senior students on Thursday 6 February 2025. Students will need to be in full school uniform and bring their school bag, laptops, books and other equipment for their timetabled lessons. The canteen will be open.

### Program

#### **Day 1 8.45am Thursday 6 February 2025**

Students will arrive for school at normal time and go to the hall for a short assembly. They will then be directed to their Period 1 lesson for Thursday Week A and attend normal timetabled classes for the rest of the day.

#### **Day 2**

#### **8.45am Friday 7 February 2025**

Lessons as per timetable for Friday Week B.

## 2025 TERM DATES FOR RHHS

Term 1	<u>Thursday 6 February 2025</u>	-	<u>Friday 11 April 2025</u>
Term 2	<u>Wednesday 30 April 2025</u>	-	<u>Friday 4 July 2025</u>
Term 3	<u>Tuesday 22 July 2025</u>	-	<u>Friday 26 September 2025</u>
Term 4	<u>Tuesday 14 October 2025</u>	-	<u>Friday 19 December 2025</u>

### **Rouse Hill High School - School Development Days 2025**

Term 1	Friday 31 January 2025 Monday 3 February 2025 Tuesday 4 February 2025 Wednesday 5 February 2025
Term 2	Monday 28 April 2025 Tuesday 29 April 2025
Term 3	Monday 21 July 2025
Term 4	Monday 13 October 2025

# CONTACT INFORMATION

**Address:** 240 Withers Road, Rouse Hill 2155  
PO Box 6120, Rouse Hill 2155

**Phone:** 9836 1890

**Email:** [rousehill-h.school@det.nsw.edu.au](mailto:rousehill-h.school@det.nsw.edu.au)

**Web:** [www.rousehill-h.schools.nsw.edu.au](http://www.rousehill-h.schools.nsw.edu.au)

**School Code:** 8291 Metropolitan North, South Creek Network

**Office hours:** 8.00am – 3.30pm

## KEY STAFF

<b>Principal:</b>	Mr Simon Kelly
<b>Deputy Principal - Years 7 &amp; 1.0:</b>	Ms Melanie Castle
<b>Deputy Principal – Years 9 &amp; 1.2:</b>	Ms Bernadette Virwani
<b>Deputy Principal – Years 8 &amp; 1.1:</b>	Ms Pip Healey & Ms Rebecca Atkins
<b>Head Teacher – Administration:</b>	Ms Monique Vogt & Ms Natasha Koski
<b>Head Teacher – Wellbeing:</b>	Ms Ebru Ates & Ms Brianna King
<b>School Counsellor:</b>	Ms Emily Myers & Ms Amara De Leon

The Counsellors are able to assist students in solving problems that impact on their school life.

<b>School Careers Adviser:</b>	Ms Kathryn Henson
--------------------------------	-------------------

The Careers Adviser is able to assist Senior students with all enquiries and assistance with work experience, subject selection, TAFE and University applications, resumes.

### **Head Teachers**

Provide support for students and staff within their faculties. Any curriculum queries are to be directed to the subject Head Teachers.

### **Senior School Team**

Year 1.0	Connections Coordinators	Mr Julian Garcia & Mr Rhys Casey
Year 1.1	Engagement Coordinators	Ms Sophie Magyar & Ms Ezgi Erdem
Year 1.2	Achievement Coordinators	Ms Kerryn Ellis & Mx Reberia

# SCHOOL HOURS

School begins at 8.45am and concludes at 2.57pm (Tuesday 2.46pm)\*. A bell sounds between periods. Supervision of students in the quad occurs from 8.15am.

Assemblies are usually held twice each term. Please check the school calendar for final dates.

Sport is held after lunch on Wednesdays and is compulsory for Year 1.0. All students need to attend the Swimming and Athletics Carnivals to meet mandatory sport requirements.

## Bell Times

### Monday, Tuesday\*, Thursday, Friday

#### Year 1.0

Period 1	8:45am – 9:24am
Period 2	9:24am - 10:03am
Period 3	10:03am - 10:42am
Recess 2	10:42am - 11:12am
Period 4	11:12am – 11:51am
Period 5	11:51am – 12:30pm
Period 6	12:30pm - 1:09pm
Lunch 2	1:09pm – 1:39pm
Period 7	1:39pm - 2:18pm
Period 8	1:39pm – 2:57pm

#### Year 1.1/1.2

Period 1	8:45am – 9:24am
Period 2	9:24am - 10:03am
Recess 1	10:03am - 10:33am
Period 3	10:33am - 11:12am
Period 4	11:12am – 11:51am
Period 5	11:51am – 12:30pm
Lunch 1	12:30pm - 1:00pm
Period 6	1:00pm – 1:39pm
Period 7	1:39pm - 2:18pm
Period 8	2:18pm – 2:57pm

\*Tuesday finish 2:46pm

### Wednesdays\*

#### Year 1.0

Period 1	8:45am – 9:24am
Period 2	9:24am – 10:03am
Recess	10:03am – 10:33am
Period 3 (7/8 Sport)	10:33am – 12:30pm
Lunch	12:30pm – 1:00pm
Period 4 (9/10 Sport)	1:00pm – 2:57pm

\*Year 1.1 & 1.2 students leave at 12:30pm

# ATTENDANCE AND ABSENCES

Missing school means your child misses out on vital information and maintaining learning routines. This can result in a loss of confidence and missing out on forming vital friendships.

Attendance is recorded each day. As a parent or caregiver you are responsible for ensuring your child attends school every day including sports days unless your child:

- has an unavoidable medical or dental appointment (preferably these should be made after school or during holidays)
- is required to attend a recognised religious holiday
- is required to attend an exceptional or urgent family circumstance (such as attending a funeral)
- is sick, or has an infectious illness.

Students need to attend school regularly to meet the course requirements of the Higher School Certificate.

If you are having difficulty getting your child to attend school regularly, you might like to talk to our Head Teacher Wellbeing or the school counsellor.

If your child has to be absent from school for any reason, including arriving late or leaving early, please contact the school to explain the reason by return SMS, email, written note or phone as soon as possible and within seven days.

Information regarding compulsory school attendance can be accessed on our school website:  
<https://rousehill-h.schools.nsw.gov.au/about-our-school/rules-and-policies.html>

## ATTENDANCE SMS

Parents of students absent from school will be notified daily via SMS.

Please reply to the SMS with your child's name, the reason for the absence and the date of absence as per the sample.

Please note that the SMS is sent through the school attendance software *Millennium* and the school mobile number associated with the SMS, 0427 016 460, can only be used for attendance SMS. To verify the reply SMS, the mobile number used to reply is automatically cross-referenced against your child's Millennium record.

Rouse Hill High School records show John Citizen is absent Monday, 6 August 2018. Please reply SMS student name/absence reason/absence date.

John Citizen / Sick with the flu / 6 Aug 2018

## MILLENNIUM PARENT PORTAL

The Millennium Parent Portal is used to distribute school reports. The portal can be accessed at the following URL <https://www.millenniumschoools.net.au/portal/>

To login parents use their unique username and password. These details will be emailed to parents during Term 1, 2025.

The Millennium Parent Portal allows parents to print historical school reports and also view their child's attendance record.

Video tutorials on how to access the portal and print reports can be viewed at the school YouTube channel. This can be accessed through an internet search of "Rouse Hill High School YouTube Channel", by clicking on the YouTube link on the school website or entering the following URL:

<https://www.youtube.com/channel/UCLtwL4vFErUNkaGRbglrD-g>

Please contact the school if you need support in accessing your child's school report.



# SCHOOL MAP

**Permitted Playground**

**Areas for students**

**During recess and lunch time:**

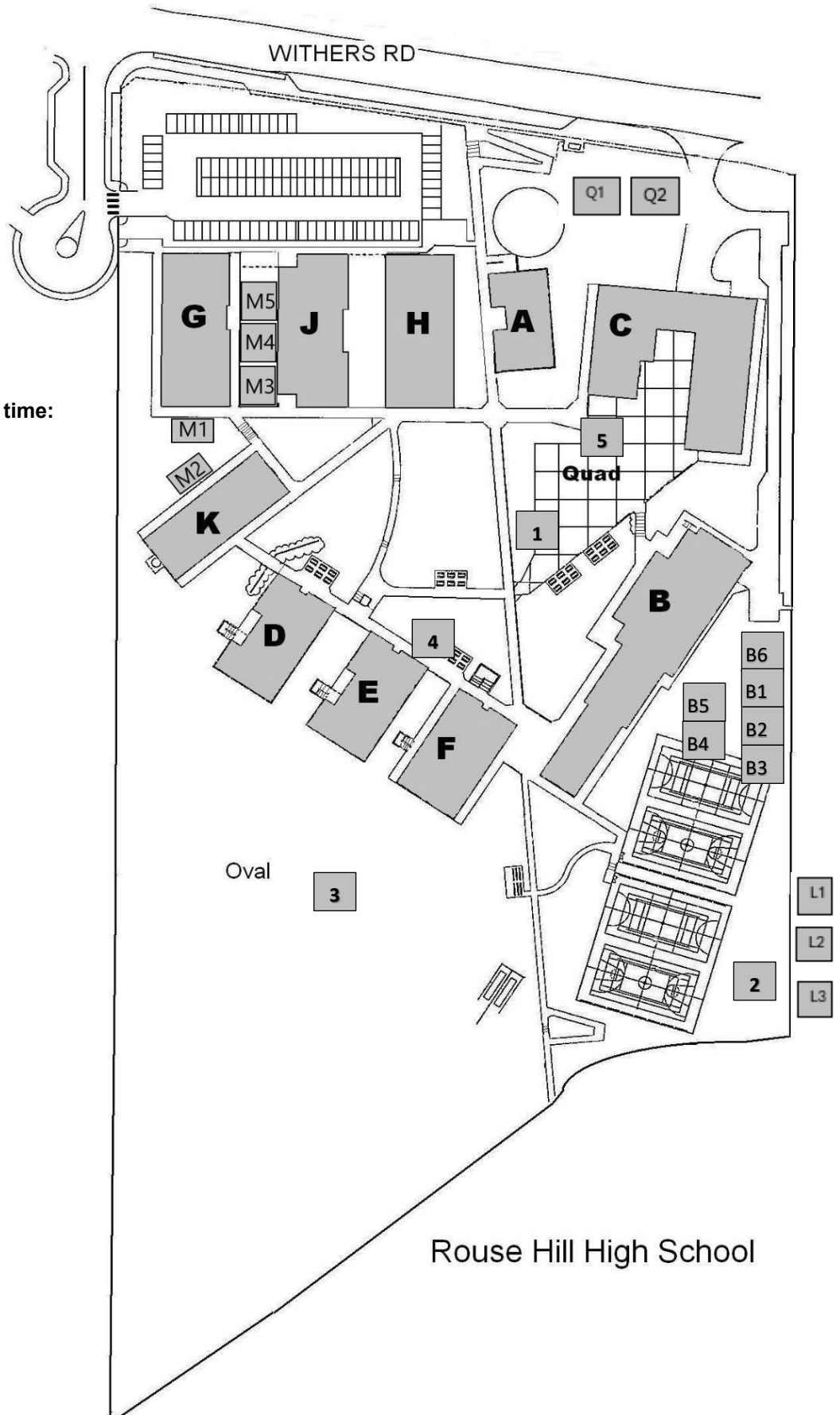
**Area 1: Quad**

**Area 2: Courts**

**Area 3: Oval**

**Area 4: Grass**

**Area 5: Canteen**





# DARE TO EXCEL

Rouse Hill High School continues to grow in 2025 as an outstanding educational facility. Our aim is to develop students who are **dynamic, accountable, resilient and engaged** learners. We encourage students to live up to our school banner statement of **DARE TO EXCEL**.

Dare incorporates our values platform and was developed with input from parents, students and staff.

**Dynamic.** I am involved and adaptable.

To be dynamic is to exercise our critical and creative thinking skills in and out of the classroom. A Rouse Hill High School student is one that is part of our school community but also a global citizen and we are curious about the world around us. By finding our positive purpose during our school career, taking risks by being part of co-curricular activities, and getting involved in leadership opportunities, we have the opportunity to flourish and thrive in all our endeavours.

**Accountable.** I know myself and hold myself to account.

A Rouse Hill High School student is one with integrity and knows themselves. We develop our character through positive purpose and emotions and hold these values to account in and out of school. Through knowing ourselves and developing our strengths, we not only contribute to our school, but the community as a whole. We know how to self-regulate our emotions to create a safe and enjoyable learning environment. We are the best version of ourselves at RHHS and foster a culture of kindness and care.

**Resilient.** I exercise grit beyond graduation.

A Rouse Hill High School student is resilient. We train the development of our grit and our ability to cope when things don't go according to plan to prepare us for the world outside of school. Our school is a safe place that allows us to fail well and celebrate success. We reflect on our wins and our losses, and treat our peers with sympathy, respect, and fairness. We are courageous in the face of adversity and persevere when we are challenged.

**Engaged.** I am a curious learner.

A Rouse Hill High School student nurtures their curiosity and love of learning when working. We are not only engaged in all aspects of school; we enjoy what we do. We develop our curiosity when learning, and feel a sense of positive accomplishment every day. Every student has the opportunity to find their passions and interests niche and this is a space where exploration of ourselves, our interests, and our purpose is celebrated. We become lifelong learners and are engaged in everything that we do.

# **THE TIMETABLE STRUCTURE**

The timetable follows a two week cycle of Week A and Week B.

## **Focus Lessons**

Every Wednesday during Period 8 there is an opportunity for you to work in small groups with your teacher to develop our DARE attributes being - Dynamic, Accountable, Resilient, Engaged students. Your teacher will guide you through a number of topics such as:

- Creating connections through friendship and belonging
- Working within and contributing to the community
- Promoting a safe and supportive school environment
- Managing change and stress
- Study and time management skills
- Careers topics covering work experience, resumes, job skills, HSC, ATAR etc.
- Leadership activities and responsibilities
- All My Own Work (Year 1.0)

## **Senior School HSC Pattern of Study**

Students at Rouse Hill High School complete 6 units of study (3 HSC subjects) in their Year 1.1 of study and 6 units of study (3 HSC subjects) in their Year 1.2 of study. Some students nominate to complete additional study at TAFE as part of the HSC pattern of study.

In exceptional circumstances, students may apply to discontinue enrolment in a subject subsequent to an interview and the submission of documentation to the Deputy Principal for consideration by the review panel.

If a student is successful in their application, they will be required to sign in at the office at recess and sign out at lunch on days in which their previously scheduled class occurred during period 1 or period 5 (Period 3 Wednesday). For all classes previously scheduled between recess and lunch, students will be timetabled to a middle school class to act as a mentor to students and assistant to the teacher.

# STUDENT GUIDE – WHAT TO DO IF?

I need to leave school early	Bring a note, written and signed by a parent/guardian explaining the reason and stating your name and class. Take this note to the Administration Office as soon as you arrive at school. You will then attend class until the time noted on your pass. Before you leave the school you must return to the Administration Office to receive your pass and sign out using the automated sign out system.
I arrive late to school	You must go to the Administration Office to sign in. You should have a note from your parent/guardian explaining the reason for your lateness. Students who arrive late without a note will be asked to return a note of explanation the following day. Attendance and late arrivals are monitored by the Deputy Principal, fortnightly.
I am absent from school	If your child has to be absent from school for any reason, including arriving late or leaving early, please contact the school to explain the reason by return sms, phone, email, or written note as soon as possible and within seven days.
I ride my bike/ skateboard to school	On arrival, walk your bike to the racks near the Administration Office. Secure your bike with a lock and chain. You must wear a safety helmet on arrival and departure from school.
I need to go to the toilet during class time	Ask your teacher for permission to go to the Administration Office. The teacher will issue you a note and a vest.
I feel sick at school	Report to the Administration Office during recess or lunch. Someone will arrange for your parent/guardian to take you home. If you feel ill during class time your teacher will give you a note sending you to the Administration Office.
I am injured at school	Report to the Administration Office for First Aid.
I need to bring my mobile phone to school	Refer to Mobile Phone Policy on page 32
I have a personal problem or am having some hassles	Tell a teacher and/or report the matter to a member of the Senior School Team.
I am out of uniform	Report to the Deputy Principal before school. You will be provided with a uniform to wear for the day or a uniform pass. Teachers will be checking and reporting uniform breaches each morning. Students who are out of uniform without a note will be required to see the Deputy Principal at recess.
Leaving school grounds in the afternoon	Walkers are to leave via the Administration Office and exit through the top gate to Withers Road, the Science gate or the back gate. Students should not exit through the service gate. If you are being picked up by car, you are to leave via the Science block and await pickup on the footpath outside the main gate/car park entrance. If you ride a bike/skateboard you are to walk your bike/skateboard on a pathway and may leave via either gate.

# **STUDENT MEDICAL DETAILS & HEALTH CONCERNS**

It is essential that the school is informed of any medical conditions. This includes allergies. We ask that you also contact the school if there are any newly diagnosed allergies, medical conditions or changes to an existing condition. This will enable the school to support the safety and wellbeing of your child.

Allergies can include insect stings, drugs, latex, food (eg; nuts, peanuts, eggs). The school needs to be informed of severe allergies such as anaphylaxis, including the need for an ASCIA (Australian Society Clinical Immunology & Allergy Inc) plan and an adrenaline auto-injector.

The school also needs to be notified of medical conditions such as asthma, diabetes and epilepsy.

Completion of a health care plan and/or ASCIA Action plan may be required.

## **BIOMETRICS: ATTENDANCE RECORDING**

Rouse Hill High School has implemented an automated sign in process for students to help us streamline our attendance recording practices. This system is particularly useful for senior students who have a flexible timetable and will be starting and finishing school at alternative times. The system will also enable those students who arrive late to be processed quickly enabling them to go to class as soon as possible.

The process includes the scanning of each student's thumb to record their unique measurements against their student number in a secure, encrypted database. This is **NOT** a fingerprint, rather a set of measurements of the contours of the thumb known as a template.

When a student arrives late to school they will simply scan their thumb and the system will record their arrival time and print a docket for them to show to their teacher when they reach class. This docket is also a record for parents/carers. Senior students with a flexible timetable will scan their thumb on arrival at school and when leaving the school.

Questions often arise about privacy and biometrics. Biometric devices never capture or use optical images. Instead, unique data is extracted from the live sample to create a template (a mathematical representation of a student's biometric data that is used by a biometric system for comparison against a database). The template basically contains point to point or vector measurement data.

This automated system has been discussed and supported by the Rouse Hill High School P&C Association.

# THE AIMS OF SENIOR STUDY

Years 1.1 and 1.2 represent the most significant stage of compulsory schooling. This stage culminates in the achievement of the Higher School Certificate (HSC).

Senior students demonstrate a more mature and independent attitude to their studies during this stage and reflect on the aims of achieving the HSC. Some students aim to:

- Continue on to tertiary studies at either TAFE or University
- Gain solid reports and references to support employment applications
- Maintain social contacts and friendships
- Gain work related skills

Senior students should aim to achieve the best possible outcome for them personally. This may be achieved by:

- Having clear goals and purpose
- Being committed to their study
- Maintaining positive participation in the classroom
- Managing time effectively and finding a balance between school and home life
- Developing responsible and independent work attitudes
- Building and maintaining positive relationships with their teachers and peers
- Taking advantage of opportunities offered by the school

## CURRICULUM OVERVIEW

### Year 1.0 and RoSA (Record of School Achievement)

RoSA is a credential provided by the NESA to students who meet the requirements for its award. The RoSA will show Year 1.0 grades as well as any grades for Year 1.1 (Preliminary) courses completed.

### Subject overview Year 1.0

All students in Year 1.0 undertake a mandatory core curriculum plus 3 elective subjects. This includes:

- |   |                     |
|---|---------------------|
| ● English   | ● Sport             |
| ● Mathematics   | ● 200 hour elective |
| ● Science   | ● 100 hour elective |
| ● Human Society and Its Environment                           | ● 75 hour elective  |
| ● Careers   | ● Focus             |
| ● PDHPE (Personal Development, Health and Physical Education) | ● Switch            |

An Assessment booklet will be issued covering all subjects. Booklets will be available on the school's website.

Year 1.0 students are also required to participate in a compulsory **work experience** placement during Term 3.

During Semester 2 all Year 1.0 students will be offered the opportunity to select subjects for Stage 6 studies.

# **FOCUS**

Rouse Hill High School is a Positive Education school, which is an approach to student learning that stems from the evidence based research of Positive Psychology in a school setting. Positive Psychology and Education focuses on looking at human strengths, qualities and character traits and how to use these strengths to flourish in everyday life.

Positive Education is the combination of traditional educational principles with the study of wellbeing using Professor Martin Seligman's model PERMAH and the Values in Action (VIA) classification which explores character strengths. Focus is held during the second period on Wednesday and follows the Positive Education Enhanced Curriculum.

Through using PERMAH at Rouse Hill High School, we aim to promote positive mental health among students, teachers, and the wider school community.

# **SWITCH (Year 10 only)**

During Switch lessons students will engage in independent learning completing learning activities that support the learning in their curriculum lessons. Students will also complete the Switch Up program targeted specifically at developing the skills and mindsets to be an effective self-directed learner. The subject curriculum focus of Switch will change every five weeks. Students will complete All My Own Work through Switch. This is a mandatory program students complete prior to starting the HSC.

# **STAGE 6 – YEARS 1.1 and 1.2 HSC & ATAR**

The Higher School Certificate is a credential provided by the NSW Education Standards Authority (NESA). At Rouse Hill High School, the HSC is delivered to Years 1.1 and 1.2 via a compacted curriculum. Students undertake the Year 11 (Preliminary) and Year 12 (HSC) components of three of their subjects in one year (Year 1.1) and complete the remaining three subjects the following year (Year 1.2).

Students begin their Year 11 (Preliminary) and Year 12 (HSC) studies midway through Term 4.

To satisfactorily complete the Year 11 (Preliminary) and Year 12 (HSC) courses, Senior students must demonstrate that they have worked with diligence to complete course outcomes. To ensure this, Senior School students must:

- Have a satisfactory record of diligence, sustained effort and application in their studies;
- Complete the requirements of each course, including practical, oral and/or project work;
- Complete assessment requirements for each course.

To qualify for the Higher School Certificate students must satisfactorily complete a Year 11 (Preliminary) pattern of study comprising at least 12 units and a Year 12 (HSC) pattern of study comprising at least 10 units of study. Note that English is compulsory for all students qualifying for the HSC. Both patterns of study must include:

- At least two units of a Board Developed course in English;
- At least six units from Board Developed courses;
- At least three courses of two units value or greater (either Board Developed or Board Endorsed);
- At least four subjects;
- Students may count a maximum of seven units from courses in Science.

More information about study patterns and subject choice are available in the Subject Selection booklet.

## **Disability Provisions**

Students who have concerns that may prevent them from performing to their potential in Stage 6 courses may apply for Disability Provisions. This may include rest breaks in exams, separate exam spaces or the provision of readers or writers. Applications for Disability Provisions **MUST** be submitted as early as possible. Contact the Deputy Principal for more information.

## **Subject Selection**

Rouse Hill High School offers a full range of 2 Unit NESA courses including Board Endorsed and Vocational Education programs across all KLA areas. Subjects delivered are determined by student demand and availability of staff; consequently courses on offer may vary from year to year. Students are given the opportunity to select Stage 6 subjects in Semester 2 each year.



# UAC (Universities Admission Centre) and ATAR (Australian Tertiary Admission Rank)

UAC is the central office that receives and processes applications for admission to most undergraduate courses at its participating institutions, as well as applications for Educational Access Schemes and Equity Scholarships. UAC notifies NSW HSC students of their ATAR and makes offers of enrolment on behalf of participating institutions, as well as processing applications for many postgraduate courses.

The Australian Tertiary Admission Rank (ATAR) is a number between 0 and 99.95. It provides a measure of a student's overall academic achievement in Year 12 in relation to their age cohort, and it helps institutions rank applicants for selection. In NSW the ATAR is calculated by the universities and released by UAC. The ATAR is based on an aggregate of scaled marks in ten units of ATAR courses, which must include two units of English (best two units of English and best eight units from the remaining subjects). It is important to remember that the ATAR is a rank, not a mark. A student's ATAR depends not only on their position in the courses they study, but on the performance of the other students in those courses, reflected in the courses' scaled means.

To be eligible to receive an ATAR students must satisfactorily complete at least 10 units of ATAR courses. ATAR courses are Board Developed courses which have Board examinations. ATAR courses are categorised as either A or B. A minimum of 8 units of category A courses are required for an ATAR.

Further information about UAC, ATAR and University Admission is available from the following website: <http://www.uac.edu.au/> or discuss university options with the school **Careers Adviser**.

## **Preliminary and HSC Courses on offer during 2025**

- |  |  |
|--|--|
| <ul style="list-style-type: none"><li>● 2 Unit English - Standard</li><li>● 2 Unit English - Advanced</li><li>● 2 Unit English Studies (B)</li><li>● EAL/D (English as an additional language or dialect)</li><li>● 2 Unit Mathematics Advanced</li><li>● 2 Unit Mathematics Standard (1 or 2)</li><li>● 2 Unit Economics</li><li>● 2 Unit Biology</li><li>● 2 Unit Chemistry</li><li>● 2 Unit Physics</li><li>● 2 Unit Investigating Science</li><li>● 2 Unit Earth &amp; Environmental Science</li><li>● 2 Unit Society &amp; Culture</li><li>● 2 Unit Business Studies</li><li>● 2 Unit Legal Studies</li><li>● 2 Unit Modern History</li></ul> | <ul style="list-style-type: none"><li>● 2 Unit Ancient History</li><li>● 2 Unit Geography</li><li>● 2 Unit Drama</li><li>● 2 Unit Food Technology</li><li>● 2 Unit Hospitality (B) – (VET)</li><li>● 2 Unit Photography, Video and Digital imaging</li><li>● 2 Unit Community and Family Studies (BEC)</li><li>● 2 Unit PDHPE</li><li>● 2 Unit Industrial Technology Timber</li><li>● 2 Unit Visual Arts</li><li>● 2 Unit Design &amp; Technology</li><li>● 2 Unit Sports Coaching</li><li>● 2 Unit Music</li><li>● 1 Unit Mathematics Extension 1</li><li>● 1 Unit English Extension 1</li><li>● 1 Unit Studies of Religion</li></ul> |
|--|--|

# YEAR 1.0 BOOK AND EQUIPMENT REQUIREMENTS

This policy covers equipment required at school.

The following books and equipment will be required for Year 1.0 2024. Calculators are mandatory and used in years 7 – 12. The Casio *fx-82AU PLUS II* scientific calculator will be available from The School Locker. Students are required to bring their personal laptops fully charged to school every day. Further details about recommended devices can be found on the school website.

Please purchase the following requirements for your subjects for Tuesday 14 November 2023. Books and equipment can be purchased from the uniform shop, The School Locker. Where possible have books covered and labelled with name, year and subject.

All students are required to bring daily for every subject:

- At least 1 blue, black and red pen, a pencil and sharpener, a ruler, an eraser, a glue stick, a small pair of scissors and coloured pencils.
- Fully enclosed leather school shoes are required for practical subjects (school requires them to be black).

**\*\*Note all textbooks for Year 1.0 are supplied by the school.**

<b>COMPULSORY SUBJECTS</b>	
English	1 x 128 page (minimum) A4 exercise book
HSIE, PDHPE	3 Subject Notebook – 300 Page
Mathematics	1 x ruler 1 x CASIO <i>fx82Au Plus II</i> calculator 1 x 128 page A4 grid book
Science	1 x 240 page A4 lined book 1 x ruler 1 x gluestick
<b>ELECTIVES</b>	
Child Studies	-
Commerce	1 x 128 page exercise book
Computing Studies	-
Engineering	1 x 64 page book 1 x A4 display folder 1 x Blue Apron (\$10 at Uniform Shop)
Food Technology	1 x 64 page lined exercise book 1 x A4 display folder 1 x White Apron (\$10 at Uniform Shop)
Industrial Technology - Metal	1 x 64 page book 1 x A4 display folder 1 x Blue Apron (\$10 at Uniform Shop)
Industrial Technology - Timber	1 x 64 page book 1 x A4 display folder 1 x Blue Apron (\$10 at Uniform Shop)
iSTEM	1 x 96 page lined exercise book
Music	1 x 96 page 12 Stave Music exercise book
Photography	Photo book (supplied once fees paid)
Physical Activity and Sports Studies (PASS)	1 x 96 page lined exercise book
Psychology	1 x 96 page lined exercise book
Textiles Technology	1 x 64 page lined exercise book 1 x A4 display folder 1 x White Apron (\$10 at Uniform Shop)
Visual Arts	1 x Visual Arts diary supplied (once fees are paid)

# YEAR 1.1 & 1.2 BOOK AND EQUIPMENT REQUIREMENTS

This policy covers equipment required at school.

The following books and equipment will be required for Year 1.1 & 1.2 - 2024. Calculators are mandatory and used in years 7 – 12. The Casio *fx-82AU PLUS II* scientific calculator will be available from The School Locker. Students are required to bring their personal laptops fully charged to school every day. Further details about recommended devices can be found on the school website.

Please purchase the following requirements for your subjects for Tuesday 14 November 2023. Books and equipment can be purchased from the uniform shop, The School Locker.

All students are required to bring daily:

- A system for organising handouts from classes such as a folder with divisions for each subject. Plastic sleeves and A4 dividers may also be required.
- At least 1 blue, black and red pen, a pencil and sharpener, a ruler, an eraser, a glue stick, a small pair of scissors and coloured pencils.
- Fully enclosed black leather shoes.

## Course specific requirements

Subject	Preliminary course	HSC Course
English (Standard, Advanced)	3x 128 page A4 exercise books (or equivalent sections in a folder)	4 x 128 page A4 exercise books (or equivalent sections in a folder)
English (Extension 1)	2 x 128 page A4 exercise books (or equivalent sections in a folder)	2 x 128 page A4 exercise books (or equivalent sections in a folder)
English (Studies)	1 x 128 page ( minimum) A4 exercise book	1 x 128 page ( minimum) A4 exercise book
EAL/D (English as an additional language or dialect)	-	
All Mathematics Courses	1 x 128 page A4 grid book (minimum) 1 x CASIO <i>fx82 AU PLUS II</i> calculator 1 x ruler	1 x 128 page A4 grid book (minimum) 1 x CASIO <i>fx82 AU PLUS II</i> calculator 1 x ruler
Hospitality	Uniform pack consisting of 1 x RHHS Food & Beverage polo shirt & 1 x black Waiter's apron (Available from the Uniform Shop) Black Dress Trousers (Tracksuit pants and tights are not acceptable) Black leather upper shoes	
Industrial Technology Timber	1 x Blue Apron (\$10 at Uniform Shop) 1 x 64 page book 1 x A4 display folder	

## Subject Textbooks

Stage 6 students are expected to purchase their own textbooks in all courses except English. A list of textbooks for Preliminary courses have been provided to students with a pre-order form. Students that have chosen to purchase textbooks through the school will receive their textbooks at the start of their course. A list of HSC course textbooks will be issued to students in Term 1, 2025

# CAREERS

Senior students can be supported with Careers at Rouse Hill High School by the Careers Advisor Ms Henson in the following ways:

- Work Experience
- A careers resources room centrally located in the Library
- Career and Transition planning
- Assistance with all areas of tertiary applications including University and TAFE
- Excursions to industry, TAFE, universities and expos
- Scholarship information
- Resume and CV development
- Interview skills and techniques
- Job Applications
- Provision of current career information through the school newsletters and website
- Access to presenters on career information
- Access to trainers for accreditation such as the White Card
- Apprenticeship, Traineeship and TVET applications
- Career website location and navigation

# COMMUNICATIONS AND CELEBRATIONS

- |                               |                                       |
|-------------------------------|---------------------------------------|
| ➤ Newsletter                  | Twice a Term                          |
| ➤ Formal/Recognition Assembly | Twice a Year                          |
| ➤ Reports                     | Interim      Term 1                   |
|                               | Semester 1    Term 2                  |
|                               | Interim      Term 3                   |
|                               | Semester 2    Term 4                  |
| ➤ Parent Teacher Interviews   | Term 1, Week 8                        |
|                               | Term 2, Week 10                       |
| ➤ P&C Meeting                 | Week 4 and 8 of each Term, Monday 7pm |



# www.studyskillshandbook.com.au

Rouse Hill High School is a subscriber to the ELES Online Study Skills Handbook.

The ELES Online Study Skills Handbook provides a comprehensive and interactive online guide for the school community (students, parents and teachers) as to the study skills needed for success in high school studies. This approach taps into students' affinity with technology to create a new and effective way to improve students' study skills.

This is a great online resource for parents and students to address all their study skills issues and concerns and enable students to learn new ways to improve their results at school. The handbook has a huge amount of information for both students and parents as well as a large number of interactive activities.

To access the handbook, go to [www.studyskillshandbook.com.au](http://www.studyskillshandbook.com.au) and **login as a subscriber** with these details:

**Username:** rousehillhs  
**Password:** 172results

The topics currently covered by the handbook are:

#### at home

1. Home Study Environment
2. Organisation and Filing
3. Time Management Skills
4. Managing Workload
5. Dealing with Distractions
6. Overcoming Procrastination
7. Developing Motivation
8. Goal Setting
9. Lifestyle and Balance
10. Managing Stress

#### at school

1. Will we ever use this?
2. Using Classtime
3. Asking for Help
4. Dealing with Conflict
5. Groupwork Skills

#### specific skills

1. Reading Skills
2. Writing Skills
3. Mathematical Skills
4. Language Skills
5. Research Skills
6. Presentation Skills
7. Science Skills

#### tests and exams

1. Summarising
2. Active Studying
3. Preparing for Exam Blocks
4. Test-Taking Techniques
5. After Tests & Exams

#### extra 'general' mini-units

1. Starting Secondary School
2. Becoming a Senior Student
3. Bullying: Issues and Strategies
4. Managing Part-Time Jobs
5. Your Brain and Memory
6. Live Your Best Life
- + Educational Kinesiology
- + Living Across 2 Houses
- + Travel: A Motivator to Learn
- + Uni: Lecture Note-Making

#### extra 'technology' mini-units

1. Technology Tools
2. Basic Computer Skills
3. Be CyberSmart
- + Useful Apps for iPads
- + Microsoft OneNote

In addition to the huge amount of content, the systematic program for students to work through includes: online quizzes, summary sheets, worksheets, lots of FAQs answered, articles and links, online polls, facility to submit questions, helpful grids and planners, jokes and quotes, student thoughts, images and photos, students can submit ideas to win, competitions, audio and video files, streaming audio (to allow students the option to read or listen to the content) And: new content added regularly, new units added each year, new features added regularly. There is also a tracking system where students save the results of their end of unit quizzes and modules over the years.

Please note:

The above user name and password is for the use of the secondary school parents and students **AT OUR SCHOOL ONLY**. Please do not pass our school's details onto students or parents from other schools or other individuals or organisations as this is a prosecutable breach of copyright and also will result in frequent password changes for our school. Please also ensure you read through the terms of use the first time you access the handbook.

**We encourage all parents and students to take advantage of this opportunity to further develop their students' study skills abilities through this online resource.**

Ph: 0416 293 087 Fax: 02 9908 1893  
info@enhanced-learning.net  
www.enhanced-learning.net

Copyright © Enhanced Learning Educational Services 2005



**Enhanced Learning  
Educational Services**  
"the study skills specialist"

# **LEARNING @ THE LIBRARY – FOR SENIOR STUDENTS**

The Library is a communal space with its primary function being to support students and teachers by providing the resources, equipment and space to facilitate teaching and learning and to promote reading for pleasure.

## **Collections:**

- Fiction: includes novels, picture books, graphic novels
- Non-fiction: includes dictionaries, atlases etc and subject/topic specific texts for specific Preliminary and HSC topics
- Vertical File: includes articles
- Past exam papers – HSC
- Journals – both print and on-line
- Online access to collection available to students and teachers

## **Facilities:**

- Seminar rooms are available for group work or quiet study
- Recreational games e.g. chess (good for stress relief)
- Computer access via desktop computers

## ***What your Librarian can do for you!***

*Your teacher Librarian can:*

- *Provide assistance with research*
- *Provide help with essay writing*
- *Create 'How To...' guides e.g. write a bibliography, in-text reference, note taking*
- *Provide resource lists for preliminary & HSC*
- *Provide hints on time management and study skills*

## **Community relationships**

By becoming a member of **Hills Shire Library Service** students have access to all their on-line databases as well as other resources - <http://www.thehills.nsw.gov.au/library.html>

State Library of NSW – join the State Library and use their comprehensive range of resources and facilities - [www.sl.nsw.gov.au/](http://www.sl.nsw.gov.au/)

# **TECHNOLOGY IN 2025**

Rouse Hill High School is committed to providing an engaging learning environment for all students and we are keen to support teaching and learning utilising one to one devices. After trials and evaluations of Chromebook and BYOD (Bring Your Own Device), one to one technology models, Rouse Hill High School introduced Chromebooks in 2015. Chromebooks offer a cost effective, low maintenance one to one solution that best meets the teaching and learning needs of staff and students at Rouse Hill High School.

All students in Years 7-12 who don't already have a suitable device are requested to purchase a Chromebook (or other suitable device) ready for use from the beginning of 2025.

In order to facilitate easy purchase of the chosen BYOD Chromebooks, Rouse Hill High School has engaged the services of two third party suppliers, School Locker (the school uniform supplier) and Learning with Technologies (LWT). Both School Locker and LWT have set up an order portal with school recommended Chromebook device options. School Locker also offers the opportunity to purchase higher specification devices (PCs and Apple Macs) which exceed school needs but may offer greater versatility for the device to be used at home for personal usage. Please note that the school can only offer limited support with getting these higher specification devices connected to the wireless network.

Both School Locker and LWT offer the option to package protective carry cases and extended warranties with the purchase of your Chromebook device. In addition to this, they also offer the option to finance the purchase of a device (subject to credit approval criteria).

## **SPECIAL RELIGIOUS EDUCATION**

The Application to Enrol in a government school form asks about religion where parents/carers may have recorded your child's religion. The question also allowed for 'no religion' to be recorded. Some parents/carers complete this information and others do not.

This information is used to plan for Special Religious Education classes (SRE) which are provided in public schools during school time by authorised representatives of approved religious groups. Combined Christian SRE and the Catholic Diocese of Parramatta provide SRE at Rouse Hill High School.

Attendance at SRE is voluntary and schools organise SRE according to parent wishes and the demands of the religious provider. Public schools are required by law to offer SRE if they are approached by religious groups.

Students who have indicated that they would like to attend scripture lessons will do so once a fortnight. Remaining students will do revision, homework or private study during this time. SRE occurs during normal timetabled lessons.

Special religious events may occur throughout the year e.g. guest speakers or performances. When these events are organised, students will bring home a permission note seeking parent/carer permission to attend.

Information regarding Special Religious Education can be accessed on our school website:

<https://rousehill-h.schools.nsw.gov.au/learning-at-our-school/religion-and-ethics.html>



# EXTRA CURRICULAR

<b>GAMES CLUB</b>	This club is for any student interest in playing board games or card games. Come along to the library on Mondays Week B from 3 to 5:45pm. Parent permission is required.
<b>CONCERT BAND (Stages 4 &amp; 5)</b>	This group is made up of brass, woodwind and percussion instruments. The band performs at school assemblies and play arrangements of popular music and film themes scored for beginners.
<b>DEBATING</b>	Debating provides students with an opportunity to hone their skills in constructing a logical argument. Teams are open to experienced and novice debaters. Throughout the year students will be provided with on-going training and compete in regional competitions.
<b>CHESS</b>	The library hosts regular chess competitions. These may be knockout or round robin.
<b>SPORT</b>	Zone and Regional competitions as they arise.
<b>DRAMA ENSEMBLE</b>	Drama is a fun and interactive way to build performance skills by participating in games and group work. Students prepare work for public showings and meet once to twice a week.
<b>VISUAL ARTS MASTER CLASS</b>	Students can participate in this weekly workshop to extend their artistic abilities across a range of mediums.
<b>SCHOOL LEADERSHIP PROGRAM</b>	Students in all years are offered Leadership opportunities by representing their year group, becoming Sports Leaders and applying to be School Captains in Year 1.2.
<b>DANCE ENSEMBLES</b>	There are numerous Dance Ensembles that operate at Rouse Hill High School. Students in the ensembles compete in Dance Eisteddfods.
<b>CHINA CLUB</b>	This is a weekly lunch time club designed to foster student's interest in all things Chinese. We learn about Chinese arts, crafts, games, traditional instruments, cooking and many other aspects of Chinese culture and language.

Other extra-curricular activities are also available.

# **SPORT**

Junior Sport (Years 7/8) is during Period 3 and Senior Sport (Years 9/1.0) is during Period 4 on Wednesdays. Stage 6 students are not required to attend sport.

Sport options fall into three categories:

- Grade Sport
- House Sport (Year 7/8 only)
- Recreational Sport (Years 8, 9 and 1.0 only)

## **Grade Sport**

All students will trial for grade sport teams at the beginning of each sport cycle. Once selected, grade teams will play against other local schools on a home/away basis. A cost to cover bus travel and hire of local venues will be required.

## **House Sport**

Students will participate in a variety of different team sports where they can practise skills and learn the value of team work, sportsmanship, communication, etc.

## **Recreational Sport**

Recreational sport is only for Years 8, 9 and 1.0. There will be a variety of options which may change with each sport cycle. It may involve an activity at school (eg. table tennis) or leaving the school premises (eg. recreational walking). There are also recreational sports that may involve a fee (eg. gym).

## **Sports Uniform**

Students wear sports uniform on Wednesdays and are required to bring enclosed leather shoes to change into if they have a practical Science or elective lesson.

# **SAFETY AT SCHOOL**

At Rouse Hill High School we hope to ensure the safety of all students, staff and visitors to our school. For students this involves safe travel to school, thinking and acting safely while at school and safe behaviour when travelling home through our community. We can be accountable for our safety by:

- Ensuring we follow road rules when travelling to and from school
- Arriving at school on time – students are to remain in the quadrangle before school
- Being equipped for lessons
- Correctly wearing the school uniform including appropriate footwear for protection
- Exhibiting responsible and sensible behaviour at all times
- Showing respect for property and for other people
- Keeping hands off to solve problems peacefully
- Supporting other students positively in the playground
- Telling a teacher if something is wrong
- Following directions to participate positively
- Accepting the consequences of my actions
- Wearing the school hat and following sun safe procedures
- Using the Bruce Purser car park for drop off and pick up of students. Parents should not use the school car park. Caballo Avenue is also available for students to be picked up.

By working together we can promote the safety of ourselves, our peers and teachers to help maintain our positive, healthy and safe environment.

# RIGHTS AND RESPONSIBILITIES

This policy covers the rights and responsibilities expected from students attending Rouse Hill High School.

## Rights and responsibilities

At the foundation of our rights and responsibilities is the ideal of being a dynamic, accountable, resilient and engaged learner. Within each ideal our core values are embedded. This platform forms the basis of our work at Rouse Hill High School.

The rights and responsibilities are based on the belief that we must **respect the rights** of all to learn and **take responsibility** for our own learning and behaviour.

By practising the responsibilities shown below, students achieve success and recognition.

daRe		Rights We have the right to:	Responsibilities We have the responsibility to:
<b>D</b>	<b>Dynamic</b>	<ul style="list-style-type: none"> <li>learn in a challenging and productive environment</li> <li>contribute to RHHS and the wider community</li> </ul>	<ul style="list-style-type: none"> <li>participate in provided opportunities</li> <li>achieve through leadership</li> <li>model good behaviour</li> <li>actively participate in the school community</li> </ul>
<b>A</b>	<b>Accountable</b>	<ul style="list-style-type: none"> <li>feel safe</li> <li>achieve and be recognised for our efforts</li> <li>assistance and support with our learning</li> </ul>	<ul style="list-style-type: none"> <li>represent the school in a positive way</li> <li>account for our actions</li> <li>achieve our personal best</li> <li>demonstrate safe behaviour</li> </ul>
<b>R</b>	<b>Resilient</b>	<ul style="list-style-type: none"> <li>respectful and fair treatment in an environment free from harassment and bullying</li> <li>seek help when needed</li> </ul>	<ul style="list-style-type: none"> <li>display resilience and flexibility</li> <li>respect others through inclusive and tolerant behaviour</li> <li>report bullying behaviour</li> <li>contribute as a productive member of a team</li> </ul>
<b>E</b>	<b>Engaged</b>	<ul style="list-style-type: none"> <li>learn in a co-operative and supportive environment</li> <li>participate in a wide variety of activities</li> </ul>	<ul style="list-style-type: none"> <li>demonstrate pride, co-operation and enthusiasm in our work</li> <li>help, support and care for one another</li> <li>strive for excellence in all activities</li> <li>listen and communicate in an effective manner</li> </ul>

***At Rouse Hill High School, our learners are dynamic, accountable, resilient and engaged.***

# **BEHAVIOUR CODE FOR STUDENTS**



Behaviour code for students

## **Behaviour code for students** **Information for parents/carers and students**

NSW public schools are committed to providing safe, supportive and responsive learning environments for everyone. We teach and model the behaviours we value in our students.

In NSW public schools students are expected to:

- Respect other students, their teachers and school staff and community members.
- Follow school and class rules and follow the directions of their teachers.
- Strive for the highest standards in learning.
- Respect all members of the school community and show courtesy to all students, teachers and community members.
- Resolve conflict respectfully, calmly and fairly.
- Comply with the school's uniform policy or dress code.
- Attend school every day (unless legally excused).
- Respect all property.
- Not be violent or bring weapons, illegal drugs, alcohol or tobacco into our schools.
- Not bully, harass, intimidate or discriminate against anyone in our schools.

Schools take strong action in response to behaviour that is detrimental to self or others or to the achievement of high quality teaching and learning.

### **Telephone interpreter service**

If you would like to discuss this document with the Principal and need assistance with English please call the telephone interpreter service on 131 450, tell them what language you need and ask the operator to phone the school. The operator will get an interpreter on the line to assist you with your conversation. You will not be charged for this service.

# Behaviour Code for Students: Actions

Promoting the learning, wellbeing and safety of all students in NSW Public Schools is a high priority for the Department of Education.

We implement teaching and learning approaches to support the development of skills needed by students to meet our high standards for respectful, safe and engaged behaviour.

## Respect

- Treat one another with dignity.
- Speak and behave courteously.
- Cooperate with others.
- Develop positive and respectful relationships and think about the effect on relationships before acting.
- Value the interests, ability and culture of others.
- Dress appropriately by complying with the school uniform or dress code.
- Take care with property.

## Safety

- Model and follow departmental, school and/or class codes of behaviour and conduct.
- Negotiate and resolve conflict with empathy.
- Take personal responsibility for behaviour and actions.
- Care for self and others.
- Avoid dangerous behaviour and encourage others to avoid dangerous behaviour.

## Engagement

- Attend school every day (unless legally excused).
- Arrive at school and class on time.
- Be prepared for every lesson.
- Actively participate in learning.
- Aspire and strive to achieve the highest standards of learning.

The principal and school staff, using their professional judgment, are best placed to maintain discipline and provide safe, supportive and responsive learning environments. The department provides a policy framework and resources such as Legal Issues Bulletins, access to specialist advice, and professional learning to guide principals and their staff in exercising their professional judgment. In this context the NSW Government and the Department of Education will back the authority and judgment of principals and school staff at the local level.

# School Community Charter

 **Collaborative. Respectful. Communication.**

The following School Community Charter outlines the responsibilities of parents, carers, educators and school staff in NSW public schools to ensure our learning environments are collaborative, supportive and cohesive.

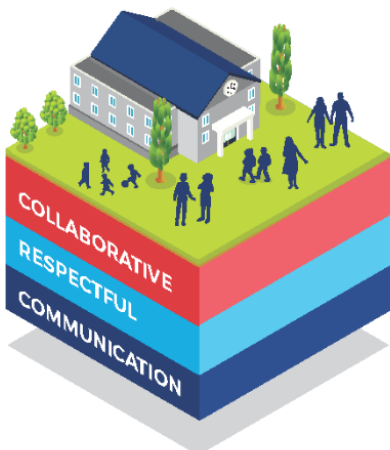
We treat each other with **respect**

## What our schools provide

NSW public schools work to create positive environments for students, staff and the entire school community that support student learning. We strive to ensure that every student is known, valued and cared for.

The best education happens when parents and schools work together.

The School Community Charter aligns with the NSW Department of Education Strategic Plan 2018 – 2022.



## Positive environments

It is important that our NSW public schools are positive environments and that parents and carers are kept informed of students' progress and school announcements.

Parents and carers can expect:

- To be welcomed into our schools to work in partnership to promote student learning.
- Communication from school staff will be timely, polite and informative.
- Professional relationships with school staff are based on transparency, honesty and mutual respect.
- To be treated fairly. Tolerance and understanding are promoted as we respect diversity.

We **prioritise** the wellbeing of all students and staff

**Unsafe behaviour** is not acceptable in our schools

We work **together** with the school

**Ensuring respectful learning environments for all members of NSW Public Schools communities.**





We create **collaborative** learning environments

We all play **our part**

We work **in partnership** to promote student learning

## Communicating with our schools

Our staff will find a time to talk to you when they can give you their full attention. Please remember that while our staff are in class or dealing with other matters, they may not be available to answer your questions immediately.

Our schools and communities will make sure that written communication is appropriate, fair and easy to read. We encourage you to use email and social media appropriately to connect with your school and stay up-to-date with up-coming events in the school community.

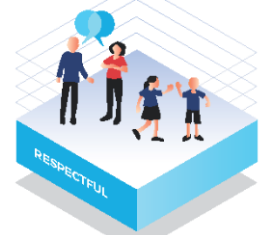
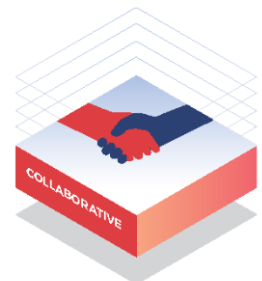
Our guide for parents, carers and students provides useful information about the complaints process:

[education.nsw.gov.au/about-us/rights-and-accountability/complaints-compliments-and-suggestions/guide-for-parents-carers-and-students](http://education.nsw.gov.au/about-us/rights-and-accountability/complaints-compliments-and-suggestions/guide-for-parents-carers-and-students)

## Respectful communication is a right

In all workplaces people have the right to feel respected. Unacceptable and offensive behaviour has no place in our school communities.

To ensure the wellbeing of students, staff and the community in our schools, steps will be taken to address unacceptable behaviour. This may include restricting contact with the school community or, in more serious cases, referral to NSW Police.



### Unacceptable behaviour may include but is not limited to:

- Aggressive or intimidating actions, such as violence, threatening gestures or physical proximity.
- Aggressive or intimidating language, including the use of obscenities, making sexist, racist or derogatory comments or using a rude tone.
- Treating members of the school community differently due to aspects such as their religion or disability.
- Inappropriate and time wasting communication.



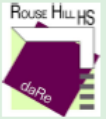
**Collaborative.**  
**Respectful.**  
**Communication.**

**School Community Charter**

education.nsw.gov.au

# Rouse Hill High School

## Student Behaviour Management Flow Chart v.2



- D** Meets school DARE expectations
- C** Approaches all learning with a Growth Mindset
- B** Does NOT disrupt teaching and learning

### Tier 1 - Level **B**

- Non-compliance & disrespect
- Disruption (talking while the teacher is talking, loud voices or noises)
- Inappropriate language & swearing
- Incorrect uniform
- Late to class
- Ignoring instructions
- Mobile phone use
- Absconding
- Physical contact (inappropriate but non-threatening)

### Reminder of Expectations

You have a choice to:

- Acknowledge your behaviour
- Comply with expectations
- Return to above the line

### Consequences

If your behaviour persists, you may be:

- Put into a seating plan
- Placed on detention
- Withdrawn from activities in class

**AND** you will have

- A conference with your teacher
- Behaviour recorded on Millennium

If your behaviour persists after a consequence, you will be placed on a **Teacher Monitoring Card** and your parent/guardian will be called. You may also have additional consequences.

### Tier 2 - Level **A**

- Excessive and sustained disruption
- Abusive & threatening language
- Bullying or harassment (student or teacher)
- Deliberate property damage
- Indecent physical contact
- Physical aggression or violence - including spitting
- Weapon or improvised weapon
- Receiving an A or B on your Teacher Monitoring Card

### Head Teacher Referral

A Head Teacher will attend your class and you will be removed for conferencing

You have a choice to:

- Acknowledge your behaviour
- Comply with expectations
- Return to above the line

**AND** you will have

- Your parent/guardian contacted
- Incident recorded on Millennium.

If you **do not** acknowledge your behaviour and make amends within the time given to you, you will be referred to senior executive staff with more significant consequences.

**Tier 3 - Senior Executive**

Escalated to Deputy Principal

**B**

**A**

# **ANTI-BULLYING POLICY**

This document provides a summary of Rouse Hill High School's anti-bullying policy.

## **Bullying is not acceptable.**

Students at Rouse Hill High School have a safe and happy environment in which to work and socialise. Bullying is not accepted. Dare to say 'NO' to bullying and harassment.

The schools anti-bullying policy is based on our DARE approach where students are dynamic, accountable, resilient and engaged when participating in positive interactions with peers, staff and the community.

At Rouse Hill High School all students, teachers and parents/guardians have a shared responsibility to create a safe and happy environment.

## **What is bullying?**

Bullying is when the following things happen again and again to someone and it is hard for the student being bullied to stop these things from happening:

- being ignored, left out on purpose or not allowed to join in;
- being made fun of and teased in a mean and hurtful way;
- lies or nasty stories are told about someone to make other children not like them;
- being made afraid of getting hurt;
- staring or giving someone mean looks or gestures;
- forcing someone to do things they don't want to;
- being kicked, hit or pushed around.

Bullying can occur face-to-face, indirectly through others or via the use of technology e.g. mobile phone, internet. Bullying is used by a more powerful person to cause fear, distress and/or harm against a less powerful person unable to stop the bullying from occurring.

## **What can you do about it?**

<b>If you are being bullied....</b>	<b>If you see someone being bullied....</b>
<ul style="list-style-type: none"><li>● Be confident. Use strong, assertive 'I' statements in a positive way. e.g. 'I don't like that. Please stop.'</li></ul>	<ul style="list-style-type: none"><li>● Support the person being bullied. Be a good, caring friend.</li></ul>
<ul style="list-style-type: none"><li>● Be around your friends, they can support and help you.</li></ul>	<ul style="list-style-type: none"><li>● Stick up for your friend; let the person being bullied know they are not alone.</li></ul>
<ul style="list-style-type: none"><li>● Report the bullying behaviour to a teacher. Let your parents know what is happening.</li></ul>	<ul style="list-style-type: none"><li>● Ask a teacher for help and report the bullying behaviour.</li></ul>
<ul style="list-style-type: none"><li>● Ignore bullies where possible. Walk away from people who are harassing you.</li></ul>	<ul style="list-style-type: none"><li>● Don't be a spectator - do something to help – if you do nothing you are part of the problem.</li></ul>
<ul style="list-style-type: none"><li>● Be careful with your internet password, what you put on the internet and how you use your mobile phone.</li></ul>	<ul style="list-style-type: none"><li>● Don't join in bullying behaviour.</li></ul>

**It's OK to talk! It's OK to ask for help!**

**Dare to say 'NO' to bullies.**

Talk to a teacher or your Year Coordinator.  
A copy of the full policy is available from the school.

# MOBILE PHONES AND ELECTRONIC DEVICES POLICY

This policy covers mobile phones and electronic devices at Rouse Hill High School.

Rouse Hill High School understands that technology may play a significant role in the daily lives of students. Safety is an issue that parents often feel can be addressed by students carrying a mobile phone to and from school. The intention of this policy is to provide:

- a safe environment to learn without inappropriate mobile phone use or distractions.
- greater opportunities for social interaction and physical activity during recess and lunchtimes.

If students bring mobile phones and electronic devices to school they must be **switched off and away while on school grounds**.

DoE policy states “Students are not allowed to use mobile phones at school, including during recess and lunch.” The full Department of Education policy can be found at <https://education.nsw.gov.au/policy-management-schools/student-use-of-mobile-phones>

Students are to follow all school procedures in regard to their use. The school is unable to ensure that such items are secure and cannot be held responsible for their loss or damage.

This policy covers all electronic communication and devices including

- Mobile phones, Audio Players, Video players, Cameras, Entertainment devices, wired and unwired headphones and speakers

Rights:

- All students have the right to learn in an environment that is free from bullying and harassment that is not disturbed by others.
- Teachers can request the phone/electronic device to be signed in at the Administration office for collection at the end of the day
- Consequences will result for repeated and inappropriate use of mobile phones and electronic equipment
- Parents telephone the Administration Office for contact with students

Student Responsibility:

- Phones and all listening technology to be turned off and packed away on entry to the school. Unless directed by a staff member, they must stay away for the entire day.
- The mobile phone/electronic device is kept in a safe place as the school takes no responsibility for any loss or damage.
- Respect others by not disturbing the learning of others through device use or defiance.
- Not to use mobile phones during school hours.
- Follow teacher instructions concerning the use of phones or electronic devices.
- Be accountable for consequences if the policy is not followed – phone can be confiscated or signed in at the Administration office. Discipline procedures will follow for repeated or serious infringements. Incidents will be documented in the school referral system.

Parent responsibility

- Encourage implementation of the Rouse Hill High School and Department of Education policies.
- Contact students through the Administration office if required.
- Contact the school for any medical exemptions for phone use that are required.
- Understand that the school takes no responsibility for loss or damage to phones or electronic devices.

Teacher responsibility

- Implement the Rouse Hill High School mobile phone policy
- Establish a classroom environment that encourages students to learn in an environment free from distractions and harassment.
- Direct students to sign mobile phones and electronic equipment into the Administration office for policy breach. Document this in Millennium and confirm compliance.
- Implement classroom discipline procedures for repeated infringements, document in Millennium.

Processes:

- **Device seen or heard on school grounds**
  - Student sent to office with slip. Mobile phone to be secured in office until the end of the school day.
  - Parent notified and informed that they will be required to arrange the collection of the phone from the office if there is a second breach of policy.
  - Failure to comply with directions will result in removal of student from classroom and parent contact. Student will be subject to standard disciplinary actions for defiance and interfering with the wellbeing of others such as Formal Caution or suspension.

## **AEROSOL POLICY**

This policy covers the use of aerosol sprays and perfume pump-packs for students attending Rouse Hill High School.

At Rouse Hill High School, as with the rest of the community, we have a number of students and staff who suffer from asthma.

The following is taken from Asthma Australia ([http://www.asthmaaustralia.org.au/Aerosol\\_sprays.aspx](http://www.asthmaaustralia.org.au/Aerosol_sprays.aspx))

*“Aerosol sprays are popular and commonly used for applying lots of products, from the personal (like body sprays or deodorants) to the domestic (like cleaning sprays). However for some people with asthma their use can trigger symptoms and may even lead to an attack.*

*When used, the liquid contained in these sprays is emitted into the air under high pressure, creating a fine mist which can spread quite a long way. The chemicals and strong smells in the mist, when inhaled, are what can trigger asthma symptoms and a possible attack. Because of the amount of time the spray stays in the air and the distance it can travel, even spraying some distance from the person with asthma can still lead to problems.*

*This most often causes issues in areas like change rooms, where people are using spray deodorants etc after exercise, and even in workplaces if there is cleaning being undertaken while there are others working in the area.*

*We recommend you avoid using aerosol sprays whenever there are other people around - there are usually plenty of good alternatives available.” (1<sup>st</sup> March 2015)*

To provide the safest environment, students are banned from bringing aerosol sprays and perfume pump-packs to Rouse Hill High School. This includes for any excursions, camps or other onsite or offsite activities. Risk management strategies will be in place for any aerosol sprays used as part of school business.

Aerosol sprays or perfume pump-packs brought to school by students will be confiscated and disposed of.

The most common form of aerosol spray available to students are spray deodorants. Alternatives such as roll-on deodorants are encouraged. Repeated breaches of this policy will result in disciplinary action.



# UNIFORM POLICY

This policy covers the wearing of school uniform to school, on excursions and for special events.

Rouse Hill High School is a uniform school. The uniform has been designed and endorsed by the P&C Association. It is the school community expectation that all students will wear the uniform without variation.

School uniform builds a sense of community and ownership in the student body, ensuring pride in the school and its attainments as well as forming a lasting impression of the school in the wider community. It contributes to the development of student self discipline and self esteem, allowing clear identification within the school and community.

## The dress code

- The school uniform must be worn at all times without individual variation.
- Years 7 – 1.0 must wear their school uniform on Monday, Tuesday, Thursday and Friday.
- On Wednesday, students may wear their school uniform or sport uniform. If students have a timetabled practical Technology or Science lesson on Wednesday, leather shoes must be worn. (See next page).
- Students are expected to be neat, tidy and well groomed at all times.
- Jewellery is to be small and unobtrusive and of a safe design. Students will be required to remove unsafe and inappropriate jewellery.
- Students representing the school are required to wear full school uniform.
- If undershirts are worn, they should be white only. All garments worn under the uniform must not be visible.
- The school hat is the only hat worn at school, on school excursions or for sporting events.
- For formal events students must be in school uniform, especially if they are participating in the assembly.
- Students are expected to wear school uniform on school excursions unless otherwise notified
- Makeup, if worn, is to be minimal and appropriate for school.
- Specialist uniform for dance and hospitality classes must be worn only for the duration of these classes.

### Girls school uniform

### Boys school uniform

<ul style="list-style-type: none"> <li>• Middle School (years 7, 8, 9). White blouse with burgundy piping and school logo</li> <li>• Senior School (years 1.0, 1.1, 1.2). White shirt with logo</li> </ul>	<ul style="list-style-type: none"> <li>• Middle School (years 7, 8, 9. White pinstripe shirt with school logo</li> <li>• Senior School (years 1.0, 1.1, 1.2). White shirt with logo</li> </ul>
<ul style="list-style-type: none"> <li>• RHHS tartan skirt with pleats, knee length, shorts, charcoal, trousers, charcoal</li> </ul>	<ul style="list-style-type: none"> <li>• Charcoal shorts or trousers</li> </ul>
<ul style="list-style-type: none"> <li>• White socks that cover the ankles</li> <li>• Black tights during terms 2 – 3</li> </ul>	<ul style="list-style-type: none"> <li>• Grey socks that cover the ankles</li> </ul>
<ul style="list-style-type: none"> <li>• Black V-neck jumper with logo (cotton or wool)</li> <li>• Official Year 1.2 Jersey</li> <li>• Soft shell jacket</li> </ul>	<ul style="list-style-type: none"> <li>• Black V-neck jumper with logo (cotton or wool)</li> <li>• Official Year 1.2 Jersey</li> <li>• Soft shell jacket</li> </ul>
<ul style="list-style-type: none"> <li>• Black leather shoes, traditional style</li> </ul>	<ul style="list-style-type: none"> <li>• Black leather shoes, traditional style</li> </ul>
<ul style="list-style-type: none"> <li>• Black scarf with school logo</li> </ul>	<ul style="list-style-type: none"> <li>• Black scarf with school logo</li> </ul>
<ul style="list-style-type: none"> <li>• daRe hat</li> </ul>	<ul style="list-style-type: none"> <li>• daRe hat</li> </ul>
<ul style="list-style-type: none"> <li>• Black school blazer, optional</li> <li>• Burgundy tie bow, optional</li> </ul>	<ul style="list-style-type: none"> <li>• Black school blazer, optional</li> <li>• Tie – burgundy with school logo, optional</li> </ul>
<ul style="list-style-type: none"> <li>• Black school backpack with the school logo</li> </ul>	<ul style="list-style-type: none"> <li>• Black school backpack with the school logo</li> </ul>

## Sport & PE uniform

The sport uniform may be worn to school on Wednesdays only. Students will change into the sport uniform for timetabled PE practical lessons.

<ul style="list-style-type: none"> <li>• Charcoal and citrus sport shirt</li> </ul>	<ul style="list-style-type: none"> <li>• Sports socks</li> </ul>
<ul style="list-style-type: none"> <li>• Charcoal sport short</li> </ul>	<ul style="list-style-type: none"> <li>• Charcoal tracksuit jacket with logo, optional</li> </ul>
<ul style="list-style-type: none"> <li>• Joggers</li> </ul>	<ul style="list-style-type: none"> <li>• Charcoal tracksuit trousers with logo, optional</li> </ul>

## Technology uniform

<ul style="list-style-type: none"> <li>• White apron – hospitality</li> </ul>	<ul style="list-style-type: none"> <li>• Blue apron – workshop rooms</li> </ul>
---	---

**If a student is unable to wear their uniform, they need to report to the Deputy Principal before the start of lesson one. Students will be loaned the required uniform article where possible. Students with inappropriate or unsafe footwear will be withdrawn from the playground at recess and lunch. If a student is continually out of uniform, consequences will be given.**

# FOOTWEAR POLICY

This policy covers the wearing of acceptable and unacceptable shoes.

All students are required to wear plain black, leather shoes to school. Acceptable school uniform shoes should have full leather uppers with no breather holes or fabric, and have a reasonable sole thickness. Boots or shoes that cover the ankle are not acceptable.

In practical Science, Visual Art and Technology lessons, it is a Health and Safety requirement and a Department of Education regulation, that appropriate, safe leather shoes are worn.

Shoes are required to be plain black with no other colour present. Plain black shoe laces should also be worn.

On Wednesdays, students have the option of wearing their sports uniform to school with runner/jogger style shoes appropriate for participation in sporting activities. If students have a practical lesson (Visual Arts, Technology or Science) on Wednesdays they need to bring their regular school shoes for those lessons.

## Acceptable examples of plain black leather shoes

✓		✓	
---	--	---	--

## Unacceptable examples of shoes for normal school wear

X *		X *	
X		X	
X *		X *	

\* This style of shoe is acceptable for wearing during sporting activities.



# UNIFORM PRICE LIST

## Girls Formal Uniform

### Junior Year 7 – Year 9

Blouse Short Sleeve with Trim	\$32.95
Skirt Formal Check	\$54.95
Shorts Formal Grey	\$40.95
Pants Formal Grey	\$48.95
Tie Maroon	\$12.00
Socks White (3pk)	\$11.95
Tights Black	\$8.50

### Senior Year 10 – Year 12

Blouse Short Sleeve White	\$32.95
Skirt Formal Check	\$54.95
Shorts Formal Grey	\$40.95
Pants Formal Grey	\$45.00
Tie Maroon	\$12.00
Socks White (3pk)	\$11.95
Tights Black	\$8.50

## Boys Formal Uniform

### Junior Year 7 – Year 9

Shirt Short Sleeve Stripe	\$32.95
Shorts Formal Grey	\$38.95
Trousers Formal Grey	\$50.00
Tie Maroon	\$20.00
Socks Grey (3pk)	\$13.95

### Senior Year 10 – Year 12

Shirt Short Sleeve White	\$32.95
Shorts Formal Grey	\$38.95
Trousers Formal Grey	\$50.00
Tie Maroon	\$20.00
Socks Grey (3pk)	\$13.95

## Winter Uniform

Soft Shell Jacket	\$60.95
Jumper Poly/Cotton Black	\$74.95
Jumper Wool/Nylon Black	\$76.95
Scarf Black	\$15.00
Blazer Black	\$129.95

## Sports Uniform

Polo Lime/Grey	\$32.95
Shorts Grey (Girls)	\$27.95
Shorts Grey	\$27.95
Jacket Microfibre	\$70.00
Track Pants Microfibre	\$44.95
Pant Track Microfibre With Cuff	\$44.95
Socks White (3pk)	\$11.95
Football Socks Grey	\$12.00

## Accessories

Cap Grey	\$14.00
Hat Bucket Grey	\$14.95
Belt Black	\$15.00
Backpack Black	\$68.00
Sports Bag Drawstring Black	\$8.00
Apron White	\$10.00
Apron TAS Navy	\$10.00
Apron Hospitality Black	\$15.00
Polo Hospitality Black	\$27.95
Polo VET Entertainment Black	\$27.95
Polo Coaching	\$27.95

Prices effective 1 December 2024. Prices are subject to change.

## SCHOOL UNIFORM SHOP

240 Withers Road, Rouse Hill  
E: RousehillHS@theschoollocker.com.au

Trading Hours:

Tuesday 8:00am – 10:00am  
Wednesday 8:00am – 10:00am  
Thursday 2:00pm – 4:00pm

Scan the QR code to find your uniform online or visit [theschoollocker.com.au](https://theschoollocker.com.au)



**SCHOOL  
LOCKER.**

## SCHOOL CONTRIBUTIONS 2025 – YEAR 1.0

Student Name:	Date:	
Item	Cost	Amount being paid
General School Contribution (Voluntary)	Child 1	\$100.00
	Child 2	\$90.00
	Child 3	\$80.00
Wellbeing Incursion	\$10.00	
Carnivals (Swimming and Athletics – entry and transport costs)	\$30.00	
P&C Levy (Voluntary)	\$25.00	
Computing Technology	\$25.00	
Food Technology	\$95.00	
Graphics Technology	\$40.00	
Industrial Technology - Timber	\$85.00	
Industrial Technology – Engineering	\$80.00	
iSTEM	\$100.00	
Music	\$20.00	
Photography & Digital Media	\$110.00	
Visual Arts	\$80.00	
<b>TOTAL</b>	\$	

## SCHOOL CONTRIBUTIONS 2025 – YEARS 1.1 & 1.2

Student Name:	Date:	
Item	Cost	Amount being paid
General School Contribution (Voluntary)	Child 1	\$100.00
	Child 2	\$90.00
	Child 3	\$80.00
Carnivals (Swimming and Athletics – entry and transport costs)	\$30.00	
P&C Levy (Voluntary)	\$25.00	
Drama	\$40.00	
Design & Technology	\$150.00	
Food Technology	\$156.00	
Hospitality	\$345.00	
Industrial Technology - Timber	\$187.00	
Music	\$60.00	
Photography, Video & Digital Imaging	\$200.00	
Sports Coaching	\$50.00	
Visual Arts	\$200.00	
<b>TOTAL</b>	\$	

# ROUSE HILL HIGH SCHOOL FACEBOOK PAGE

This Rouse Hill High School Facebook page was established in 2016 as a forum for staff to communicate with students and parents about activities and events throughout the school year. Please "Like" our page to receive updates about events and information that relates to our school, and to recognise and acknowledge the achievements of students at Rouse Hill High School.

Search for: "Rouse Hill High School" using the Facebook app, Facebook website or the following URL [www.facebook.com/rousehillhighschool](http://www.facebook.com/rousehillhighschool)

The official page has the cover photo as shown below



We like positive comments and posts but we don't tolerate personal attacks.

We ask all users to be **respectful & responsible users** of the RHHS Facebook Page



Rouse Hill HS has a number of **Facebook Administrators** who monitor the page. Any posts that are repetitive, written in capital letters, use offensive language or are unlawful, will be removed

## RULES OF ENGAGEMENT

Posts and comments should **not** be abusive, bullying, defamatory or vilify any individual, group, the school or the Department of Education

We remind online users to apply the principles of **good digital citizenship** when communicating through our Facebook Page.

While we welcome **positive comments and posts** and **constructive criticism** about school business, activities and events, we do **not** endorse or support negative defamatory comments or abuse

For related DoE policies and/or the Rouse Hill High School Policy see:  
<http://www.dec.nsw.gov.au/> or  
<http://www.RouseHill-h.schools.nsw.edu.au/>